

An aerial photograph of a serene landscape at sunset. A large, calm lake reflects the golden light of the setting sun. On the right side of the lake, a white church with a red roof and a steeple stands among trees with autumn foliage. In the foreground, a small island in the lake is covered with several wooden houses with dark roofs. The background shows rolling green hills and more trees. The overall atmosphere is peaceful and scenic.

EN

Cēsis
attracts



TOURIST GUIDE

visit.cesis.lv

For decades, invariably popular and friendly to travellers, the heart of Vidzeme's character is defined by the depth of its culture and history, the tranquil pace of life in its small towns and rural parishes, and the skills of its craftsmen passed on from generation to generation. In turn, it gets its romantic notes from the quiet coves of water lilies lining Piebalga's lakes, and from the music and poetry born in the memorial houses there. The yearning for space and freedom emanating from the depths of Līgatne's forests chime with the call to adventure from the fast flowing Amata. The perennial creativity of Cēsis lends the region urban charm, while one suspects that its trading genes originate in Pārgauja, in the world's tiniest Hanseatic League town - Straupe. In contrast, a touch of obstinacy and rebelliousness in the region's character can be found in Priekule, where Eduards Veidenbaums lived and composed poetry. Gauja National Park invites you to enjoy the primordial beauty of nature, while the gentle flow of the Gauja offers you peace and harmony.

So it's time to take a trip!

Cēsis and vicinity	4
Līgatne and vicinity	12
Amata and vicinity.....	17
Liepa and vicinity	20
Piebalga and vicinity	22
Straupe and vicinity	28

Designations:

 Family friendly

 Only open in summer

 Only open in winter

CĒSIS and vicinity

A place where history blends with modernity in a friendly atmosphere. Here, one moment you could find yourself attending a medieval banquet or surrounded by pristine nature, whereas a moment later you could be discovering the secrets of the cosmos or meeting a camel. Here is the birthplace of the Latvian national flag and home to people with red, white and red hearts.

Photo: Rožu Square

CĒSIS and vicinity

5

1 Brūzis Science, Art and Gastronomy Centre

Lenču Street 11, Cēsis, GPS 57.3148, 25.2710, +371 64127951, www.videsinstituts.lv

Brewing traditions in Cēsis date back to the 15th century. The old brewery was built in 1878 and is included on the list of nationally protected cultural monuments. The brewery's grounds are home to Mala Arts Space, where visitors can attend various concerts and events, as well as contemporary art exhibitions.



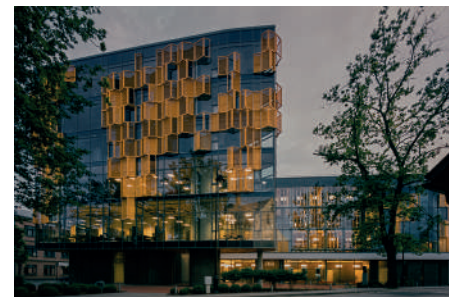
2 Cēsis Skiing and Biathlon Centre

Lejas Luksti, Vaive Parish, GPS 57.3039, 25.3786, +371 26433500, www.occesis.lv

Cēsis Skiing and Biathlon Centre offers active recreation opportunities throughout the year, as well as organising various sports events. In winter, courses of varying degrees of difficulty are open to distance skiers, who can also rent skiing equipment from the centre. During the summer season tracks can be used by runners and roller-skaters. Visitors can play disc golf and enjoy Nordic walking in the territory all year round.

3 Cēsis Vidzeme Concert Hall

Raunas Street 12-1, Cēsis, GPS 57.3133, 25.2764, +371 64119922, www.cesukoncertzale.lv



This acoustic concert hall hosts a wide range of high quality professional arts events to delight the public. These include symphony, chamber music, jazz and contemporary musical concerts, operas, ballet and dramatic theatre performances, arts projects, film programmes and visual art exhibitions.

4 Cēsis Exhibition Hall

Pils Square 3, Cēsis, GPS 57.3137, 25.2724, +371 28015339, www.cesupils.lv

Cēsis Exhibition Hall was built to serve as the manor house stables and coach-house, but since 1985 the building's primary function has been as an arts venue. It hosts a rotating programme of art exhibitions featuring works by Latvian Masters and contemporary artists, along with chamber music concerts, lectures and performances.

5 Cēsis Bakery

Rīgas Street 18, Cēsis (entrance from Lielā Skolas Street), GPS 57.3120, 25.2720, +371 26412803, www.cesumaize.lv

This bakery in the very of the Old Town of Cēsis bakes bread from flour made from biologically-grown hulled wheat (spelt), buckwheat, oats and barley grown in Latvia and prepared with natural yeasts. Booking in advance, the Master Baker will share some of the secrets of baking healthy bread.

6 Cēsis Market

Uzvaras Boulevard 24, Cēsis, GPS 57.3148, 25.2824, +371 26117224, www.cesutirgus.lv

Right in the centre of town, one can buy treats and delicacies made by the local farmers and artisan producers. Once a month, an expanded market is held, which attracts traders from all over Latvia.

7 Cēsis Old Town

Rīgas Street, Skolas Street, Pils Street, Torna Street, Katrīnas Street, etc., GPS 57.3130, 25.2731

The Old Town is renowned for its preserved network of medieval streets, a number of historically and architecturally notable buildings, as well as its ancient market squares: Rožu Square and Livu Square. You can find out more about the old town's buildings by taking an individual walk along the Cēsis Museum Walks' route, or on a guided tour that can be booked at Cēsis New Castle.

8 Cēsis Castle Complex

Pils Square 9, Cēsis, GPS 57.3134, 25.2709, +371 26576111, www.cesupils.lv



Dating back to the period between the 13th-16th centuries, the Cēsis Medieval Ruins include the former Livonian Order Stone Castle and the Master's Residence. Taking candle-lit lanterns in hand, visitors can take a tour of the castle, enjoy a panoramic view of the tower from the Western Tower and visit the medieval prison. In summer, the castle grounds host artisans at work and a Medieval Activities' Centre, while visitors to the medieval kitchen garden can meet the gardener.

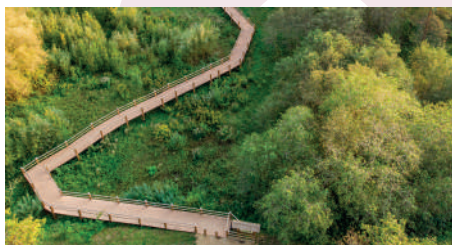
The New Castle (built at the end of the 18th century) was formerly home to the noble von Sievers family, but since 1949 it has housed the Cēsis History and Art Museum. Visitors to the castle can view a permanent exhibition Cēsis - Mirror to the History of Latvia, the ornate 19th century castle interior, as well as rotating exhibitions. A visit to the castle will reveal why Cēsis is known as the birthplace of the Latvian national flag. A picturesque panorama of town open up from the Lademaher Tower.



9 Cīruliši Nature Trails

Cīruliši, Cēsis, GPS 57.3111, 25.2266

Nature trails marked with comprehensive information introduce walkers to the development of the Ancient Gauja River Valley from the Ice Age through to the present day. Among the sights on view are the Cīrulišu Cave, Ligavas Cave, Spoguļu Cliffs and Zvanu Cliffs, etc. The trail is suitable for both walks with a baby carriage and bike riding.



10 Disc Golf

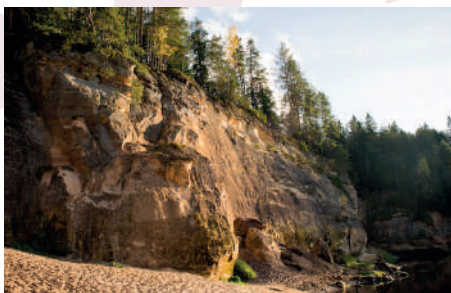
Izmēģinātāju Street 1a, Priekule, GPS 57.3103, 25.3705, +371 29393403, www.vgs.lv

The 18 basket course offers beginners a real challenge and great recreation for experienced enthusiasts of the game. Part of the course is located in an open space, another section is in a forest park giving players various options. Group activities with a trainer are also available.

11 Ērgļu Cliffs

Priekule Parish, GPS 57.3608, 25.2607

One of the most picturesque cliff outcrops in Latvia. It is a majestic and imposing wall with a picturesque landscape that open up from the viewing areas above.



12 The Gardens of Guna and Jānis Rukšāns

Jaunrūjas, Raiskums Parish, GPS 57.3489, 25.1133, +371 29488877

Guna and Jānis Rukšāns have created the biggest collection of plantain lilies in Latvia - their gardens contain 250 varieties, accompanied by just as many phloxes, 100 lilies and around 80 varieties of water lilies. Their collection of crocuses includes almost all of the 250 species known around the world today.

13 Kalējāla

Raiskums Parish, GPS 57.3794, 25.2627

Kalējāla can be viewed in Strīkupe Valley and is a protected geological nature monument. About 20 years ago, it was the longest cave in Latvia at 49 m. A convenient car park and viewing platform have been built next to the cave.

14 Karjers Active Recreation Centre

Priekule Street 21, Cēsis, GPS 57.3175, 25.3182, +371 20444141, www.cesukarjers.lv

Giving the old Cēsis dolomite quarry a second life, a popular water sports centre has been established here, suitable for both SUP and wakeboard aficionados.

15 Space Exploration Centre

Cīrulišu Street 63, Cēsis, GPS 57.3016, 25.2365, +371 27873226, www.kosmosacentrs.lv

The Centre's exhibition offers visitors the chance to discover the history of space research and life on other planets, to take part in space missions to Auseklis Space Station, as well as to learn about the profession of an astronaut and much else besides.

16 Labas Saknes Healthy Snack Workshop

Lielā Skolas Street 6, Cēsis, GPS 57.3126, 25.2729, +371 26568037, www.labassaknes.lv

Visitors have the chance to sign up for a masterclass in which they can learn about the importance of vegetables in nutrition, sample products and make their own delicious sweets.

17 Laureta Candle Workshop

Pļavas Street 7, Cēsis, GPS 57.312008, 25.278085, +371 29277504, www.lauretacandles.com

Visitors to this candle workshop have the chance to learn how candles are made from different waxes and to buy them. By booking a tour of the candle workshop, participants have the opportunity to make their own symbol of light.

18 Maija Park with Kids' Playground

Maija Park, Cēsis, GPS 57.3145, 25.2739

This park is ideally suited for recreation with children. It includes a special kids' attraction zone, skate park and bike park. In summer, visitors can enjoy the sight of illuminated fountains and a pair of black swans.



19 MUSEUS Exhibition Hall

Rīgas Street 22, Cēsis, GPS 57.3117, 25.2719

To introduce Latgale's energetically powerful cultural heritage to audiences in Cēsis, space has been allocated in the exhibition hall for works by Latgalian ceramic artists, jewellery artists and painters. The exhibition on view changes every three months.



20 Global Center for Latvian Art

Lielā Skolas Street 6, Cēsis (Entrance from Baznīcas Square), GPS 57.3125, 25.2724, +371 20281728, www.plmc.lv

The center was established with the goal of introducing visitors to works of art created by Latvian artists who left Latvia during the Second World War, as well as those of a young generation of artists living abroad.

21 Castle Park and Riekstukalns

Cēsis Castle Park, Cēsis, GPS 57.3137, 25.2697

A landscaped park built in the early 19th century by the von Sievers family complete with an artificial pond, boat wharf and gazebos. A sculpted bust of the owner of the New Castle, Carl Gustav von Sievers was erected on Kārlis's Hill. Adjoining the open air stage is the ancient Wenden castle mound, Riekstukalns (11th-13th century), which was once home to a wooden castle around which the town of Cēsis took shape.

22 Raiskumietis Brewery

Rūķi 1, Raiskums Parish, GPS 57.3118, 25.1574, +371 20370370

In the former manor house barn, amber and dark lagers are brewed according to ancient recipes and bread is baked from natural yeast. By booking a tour, visitors can learn the finer points of brewing beer and baking bread, as well as enjoying nuances of flavour during a hearty sampling.

23 Rakši Camel Park

Rakši, Drabeši Parish, GPS 57.2762, 25.1985,
+371 20009097, www.kamieli.lv

Camels, alpacas, lemurs, kangaroos, zebras, Valais blackneck goats, Poitou donkeys and families of rabbits welcome visitors to Rakši. Visitors can go for a walk with the lamas, ride a camel, take a ride in a donkey-drawn carriage, or to feed the lemurs and other animals. 📍

**24 Rifs Swimming Pool**

Cēsis Prospect 46a, Priekulji, GPS 57.3138, 25.3624,
+371 29227544, www.rifs.lv

The swimming pool offers both grownups and kids the opportunity to actively enjoy some recreation time in the big pool, gym, aerobics halls, or to relax in the various saunas or two smaller pools with massage jets. Guest can also enjoy the refreshments on offer at the juice bar. 📍

25 Sandas Farm

Jaunstilbi, Raiskums Parish, GPS 57.34160, 25.1504,
+371 29423270

Individual horse riding training is available with the chance to take part in competitions. Visitors can also enjoy therapeutic services or a simple ride on the back of a horse. Advance booking required. 📍

26 Red Cliffs and Rūcamavots

Raiskumkrogs, Cēsis, GPS 57.3200, 25.2205

200m long and about 10m high, these picturesque sandstone cliffs are adorned with countless cracks and wrinkles. Several springs emerge from the cliffs, of which the best known is Rūcamavots.

27 Saules Park

Cēsis Prospect 7, Priekulji, GPS 57.3121, 25.3546

Blossoming in the sun in Saules Park to the delight of visitors are countless species of plants whose names can be discovered by those taking a walk along the park's trails. The unique sun dial will only tell the time if you take part in the process of determining the time. The part is at its most colourful in spring when 120 rhododendrons are in full bloom. 📍

28 Siļķes. Native home of the Sculptors' Jansons

Dzirnavu Street 33, Cēsis, GPS 57.3181, 25.2310,
+371 29124876, +371 26498912

Visitors to this home of a family of sculptors can visit a workshop where they will find finished sculptures and works in progress by three generations of artists, as well as have the opportunity to view artist Matīass Jansons at work. During the tour, visitors can also enjoy the sight of a large sculpture garden. Advance booking required.

29 Burning Conscience - History Exhibition and Memorial Site Honouring Victims of Communist and Nazi Terror

Pils Street 12, Cēsis, GPS 57.3133, 25.2727,
+371 25445433, www.sirdsapzinasugunskurs.lv

Inscribed on several memorial plaques in the courtyard are names of 643 people from the historical District of Cēsis who died as a result of repressions. Detention cells are home to a permanent history exhibition revealing individual tales of resistance and the story of the occupation of Latvia.

**30 Supervāvere and Ozolkalns Skiing Park**

Saulkrasti, Drabeši Parish, GPS 57.2943, 25.2221,
+371 28393410, www.ozolkalns.lv

In summer, 60 obstacle courses of differing types and degrees of difficulty can be found at various heights among the park's trees. Various attractions are available at ground level too including imitated hunting. Visitors



to the territory can also enjoy picnic places, a sauna and rent boats and rafts. In winter, Ozolkalns offers visitors slopes up to 500 m, which are longest in Latvia, along with trampolines, skiing and snowboard training and equipment rental. 📍

31 Svētavots

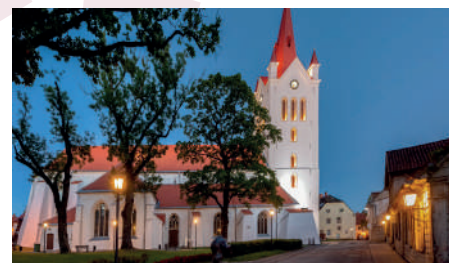
Atpūtas Street 12, Cēsis, GPS 57.3037, 25.2358,
+371 29460660, www.svetavots.lv

In the Ancient Gauja River Valley, an ice-free spring emanates from the Svētavots Cave. Its water is considered to have healing properties. A walking park has been created around the spring. If you make a prior reservation, a guide will conduct a health ritual. Admission to the site is paid and bookings must be made in advance. 📍

32 St. John's Church

Lielā Skolas Street 8, Cēsis, GPS 57.3121, 25.2716,
+371 64121549, www.cesusirds.lv

St. John's Church is one of the oldest and most impressive sacral buildings in Latvia. It is home to an important collection of gravestones, an altar painting by Estonian artist Johann Köler, as well as one of Latvia's most resonant concert organs. Rebuilt in 1853, the church tower offers a panoramic view of the town. The church also functions as a concert hall.

**33 Ungurmuīža**

Ungurmuīža, Raiskums Parish, GPS 57.3625, 25.0888,
+371 22007332, www.ungurmuiza.lv



A unique example of 18th century wooden Baroque architecture. The home to the lords of the manor is the only preserved early 18th century wooden castle in Latvia. Visitors can view the indoor paintings and enjoy the von Campenhausens' feast at the Ungurmuīža Restaurant. 📍

34 Veselava Manor

Viesturi, Veselava Parish, GPS 57.2897, 25.4763,
+371 26100962, www.veselava.lv

In an imitation of medieval fortified castles, Veselava Manor Castle is built on an oval island, which is surrounded by a ditch on all sides. Visitors to the castle can learn about the von Campenhausen family and inspect the manor house's unique flue system.

**35 Vēverīšas Weavers' Workshop**

Rīgas Street 19, Cēsis, GPS 57.3116, 25.2721,
+371 26054322

Latvian folk costumes from various parts of the country are made at the workshop, where visitors can also view and buy various craftworks made by local artisans. Visitors can also observe how Latvian folk patterns are woven into textile fabrics on looms.

36 Medieval Costume Workshop

Valņu Street 5, Cēsis (entrance from the courtyard),
GPS 57.3120, 25.2746, +371 29792085

The workshop offers visitors the opportunity to discover medieval clothing, accessories and footwear. They can try on clothing for size, be photographed, rent costumes, and listen to a lecture about the development of medieval clothing. Children can take part in the process of making puppets and participate in the puppet show Puppets Tell Tales. Advance booking required.

37 Nordic Nature Medicine Museum

Pils Square 15, Cēsis, GPS 57.3141, 25.2717,
+371 29793996, www.naturemedicine.lv

An exhibition showcasing over 40 medicinal herbs exemplifying nature in Latvia and the Nordic countries will enhance the knowledge of those already familiar



with medicinal herbs. But for those who are just discovering the natural world and its valuable products, the museum will be an exciting journey into a world with a colourful history and immensely promising future. ❌

38 Žagarkalns Skiing Base

Cirulišu Street 70, Cēsis, GPS 57.3006, 25.2301, +371 26266266, www.zagarkalns.lv

Latvia's most popular winter sports recreation complex, with 9 slopes of various lengths and degrees of difficulty, and snowboard parks. The complex offers equipment rental and maintenance, instructors, a sports equipment store, café and sauna. 🏠❄️



Cafés and Restaurants

Café Aroma, Lenču Street 4, Cēsis, +371 29102277

Cafe 7 Bar, Rīgas Street 7, Cēsis, +371 29486654

Bistro CATA, J. Poruka Street 8, Cēsis, +371 29113954

Café Centra bistro, Raunas Street 12, Cēsis, +371 24400070

Café Go to Sushi Bar, Rīgas Street 9-1a, Cēsis, +371 24204050

Glendeloka Pub, Ata Kronvalda Street 2b, Cēsis, +371 64161016

H.E. Vanadzīņš Northern Restaurant, Rīgas Street 15, Cēsis, +371 24771771

Hotel Zaķīši restaurant, Aroniju Street 3, Raiskums, +371 26645599

Café Idi Rīdi, Raunas Street 17, Cēsis, +371 28632756

Café Jāņoga, Valmieras Street 21a, Cēsis, +371 28309298

Restaurant Kest, Valmieras Street 1, Cēsis, +371 27779928 (tikai ar rezervāciju)

Krūmiņu Nams Pâtisserie, Pļavas Street 13, Cēsis, +371 64124922

Café Local Concept, Rīgas Street 18, Cēsis, +371 26556529

Art Space Mala Café, Lenču Street 11, Cēsis, +371 26101945

Restaurant Mango Sky Lounge, Raunas Street 12, Cēsis, +371 23000210

Coffee Shop Melnais Gulbis, Rīgas Street 20, Cēsis, +371 26175841

Café New Tortillia and Salads, Rožu Square, Cēsis, +371 22078970 ❌

Café Pagrabiņš, Vienības Square 1, Cēsis, +371 64120125

Pande Café, Raunas Street 10, Cēsis, +371 25596910

Gastrobar Stop, Veidenbauma Street 2, Priekulī, +371 27336505

Town Kebab Café, Kr. Valdemāra Street 3, Cēsis, +371 29480465

Café Priede, Rīgas Street 11, Cēsis, +371 22421716

Raiskums Café, Apaļkalns, Raiskums Parish, +371 29252679 ❌

Café Rūsa, Rīgas Street 11, Cēsis

Smilga Café, Rīgas Street 22-4 (entrance from Lielā Skolas Street), Cēsis, +371 20388103

Café Solo, J. Poruka 21a, Cēsis, +371 64107927

Pizzeria Studio Pizza, Rīgas Street 20, Cēsis, +371 20606000

The Iela Café, Rīgas Street 27, Cēsis, +371 28 812 101

Trimpus Brewery, Lielā Skolas Street 6, Cēsis, +371 23002000

Ungurmuīža Restaurant, Ungurmuīža, Raiskums Parish, +371 22007332

Old Town Kebab, Rīgas Street 4, Cēsis, +371 20273139

Hotel Villa Santa Restaurant, Gaujas Street 88, Cēsis, +371 64177177

Café Vinetas and Allas Kārumlāde, Rīgas Street 12, Cēsis, +371 28375579

Bārs Zaļa Zāle, Rīgas Street 25, Cēsis, +371 27802155 ❌

Wenden Brewery, Edvarda Treimaņa-Zvārguļa Street 13, Cēsis, +371 26330631

Accommodation

Hotel Cēsis, Vienības Square 1, Cēsis, GPS 57.3142, 25.2745, +371 64120122, www.hotelcesis.lv

Hotel Katrīna, Mazā Katrīnas Street 8, Cēsis, GPS 57.3116, 25.2681, +371 20008870

Hotel Province, Niniera Street 6, Cēsis, GPS 57.3160, 25.2751, +371 26407008

Concept Hotel Rakši, Drabeši Parish, GPS 57.2762, 25.1985, +371 20009097, www.kamieli.lv

Ungurmuīža, Raiskums Parish, GPS 57.3636, 25.0886, +371 22007332, www.ungurmuiza.lv

Hotel Vanadzīņš, Rīgas Street 15, Cēsis, GPS 57.3104, 25.2728, +371 24771771, www.vanadzinaarestorans.lv

Hotel Villa Santa, Gaujas Street 88, Cēsis, GPS 57.31134, 25.2304, +371 64177177, www.villasanta.lv

Hotel Zaķīši, Aroniju Street 3, Raiskums, Raiskums Parish, GPS 57.3149, 25.1546, +371 26645599, www.hotelzakisi.lv

Holiday Home Bellas Namiņš, Meža Street 2, Cēsis, GPS 57.2991, 25.2852, +371 29727244

Holiday Home with Sauna, Mūrlejas Street 12, Cēsis, GPS 57.3125, 25.2270, +371 27841107, www.zagarkalns.lv

Holiday Home Estere, Gaujas Street 50, Cēsis, GPS 57.3078, 25.2523, +371 26516600

Holiday Home Garden Apartment, Bebru Street 2, Cēsis, GPS 57.3050, 25.2849, +371 29155452

Holiday Home Jaunbrenguļi, Raiskums Parish, GPS 57.3209, 25.2097, +371 26330479, www.jaunbrenguļi.lv

Holiday Home Noras House, Noras Street 9, Cēsis, GPS 57.3183, 25.2693, +371 25486424

Holiday Home Sun, Sea and Cats, Oktobra Street 4, Cēsis, GPS 57.3189, 25.2675, +371 29364219 ❌

Holiday Home Zābaciņi, Drabeši Parish, GPS 57.2961, 25.2317, +371 29119797

Rest House Ziedu Sauna, Auciems, Raiskums Parish, GPS 57.3352, 25.1388, +371 29944017, www.ziedupirts.lv

Guest House Laba Oma, Meža Street 2, Cēsis, GPS 57.2991, 25.2852, +371 29727244

Guest House Rendas, Ausekļa Street 14, Cēsis, GPS 57.3164, 25.2958, +371 26249818

Guest House Ungurmalas, Raiskums Parish, GPS 57.3458, 25.0963, +371 26482623, www.ungurmalas.lv

Glamping Site and Guest House Kārklīņi, Vaive Parish, GPS 57.2196, 25.3581, +371 25699250

Campsite Apaļkalns, Raiskums, Raiskums Parish, GPS 57.3177, 25.1477, +371 29448188, www.apalkalns.lv

Campsite Cēsuplosti, Pārgaujas Street 2, Cēsis, GPS 57.3214, 25.2273, +371 26576205, www.cesuplosti.lv

Campsite Jeņču Boats, Gaujas Street 90a, Cēsis, GPS 57.3179, 25.2225, +371 20607509, www.jenculaivas.lv

Leisure Base Ķecis, Ķeči, Auciems, Raiskums Parish, GPS 57.3287, 25.0906, +371 27400316

Campsite Oškalns, Meijermuīža, Drabeši Parish, GPS 57.2939, 25.2267, +371 27842842, www.oskalns.lv

Campsite Ozolkalns, Saulkrasti, Drabeši Parish, GPS 57.2954, 25.2138, +371 26400200, www.ozolkalns.lv

Campsite Upes 19, Upes Street 19, Cēsis, GPS 57.3332, 25.2245, +371 29219279

Campsite, Boat Rental Žagarkalns, Mūrlejas Street 12, Cēsis, GPS 57.3073, 25.22129, +371 26266266, www.zagarkalns.lv

LĪGATNE and vicinity

Līgatne is located within the territory of Gauja National Park with sandstone outcrops and countless caves used by the hard working residents of Vidzeme for their everyday needs. It is a town in which picturesque nature blends with unique 19th century wooden architecture and industrial heritage. Now you can enjoy the offerings of restaurants in restored historical buildings or wine in a sandstone cliff cellar cave, climb viewing platforms to enjoy the wealth of natural landscapes, or explore the captivating walking trails.

Photo: Ānfabrika surroundings and fish route

LĪGATNE and vicinity

13

39 Deer Park, Annas dzirnavas

Annas dzirnavas, Zaube Parish,
GPS 57.0335, 25.3500, +371 29176917

Booking in advance, visitors can enjoy an informative excursion, feed the animals and pose for photographs.



40 Krigaļi Mill

Nītaure Parish, GPS 57.0616, 25.1457,
+371 29441391

The mill was built in 1938. The mill is in working order. A guide will tell you about the history of the mill, its operation and the HEP built in 1997. In summer, visitors can buy garden berries and shitaki mushrooms.

41 Lejas Suces Farm

Lejas Suces, Nītaure Parish, GPS 57.0554, 25.1791,
+371 29174211

Meet the farm animals and poultry (chickens, quail, ducks, geese, rabbits, pigs and sheep). Visitors can buy seasonal biologically grown vegetables and berries. This is a place to organise events, relax in close proximity to nature, with places for tents (offer available from May to September).

42 Līgatne – Industrial Heritage Cultural and Historical Centre



A place where industrial heritage harmoniously blends with nature. This is nature at its most colourful including sights like the River Līgatne, Lustūža and Ānfabrika Cliffs with 333 cave cellars, and the nearby Paper Factory and 19th century wooden architecture set against the backdrop of the hilly relief. Booking in advance at the Līgatne Tourism Information Centre at Sprīngu Street 2, or by calling +371 29189707, group excursions can be arranged around the historical centre, cave cellars and forests.

43 Līgatne Cave Cellars

Sprīngu Street 2, Līgatne, GPS 57.2334, 25.03978,
+371 29189707

The first cellars in Līgatne's rocks were created as far back as the 18th century. The cave cellars in the centre of Līgatne are open to the public for sightseeing and hiking. To view the caves beyond the town centre, it is necessary to book the Rock and Cave Trail excursion at the Līgatne Tourism Information Centre.

44 Līgatne Nature Trails

Līgatne Nature Trails, Līgatne, 57.2486, 25.0150,
+371 28328800, +371 64153313,
www.ligatnesdabastakas.lv

A 5 km long set of landscaped trails within the territory of Gauja National Park offering visitors the chance to see some of the wild animals found in Latvia. The Līgatne Nature Trails are open all year round. 🐾



45 Līgatne Ceramic Clay Workshop

Līgatne House of Crafts, Pilsoņu Street 4, Līgatne,
GPS 57.2344, 25.0453, +371 22848109

The ceramics workshop is in the terraced houses once occupied by workers at Līgatne Paper Factor. From 1889 until 1990, this building was home to Līgatne's Old School. Booking an excursion in advance, visitors have the chance to find out about day-to-day life in the potter's workshop and buy tableware with no store markup. During the excursion, for an additional charge, you can make your own souvenir.



46 Ligatne Paper Factory

Pilsoņu Street 1, Ligatne, 57.2372, 25.0416, +371 68203235, www.papirfabrika.lv

For the past 200 years, the name of Ligatne has been closely linked to Ligatne's industrial heritage in the form of the paper factory. Booking in advance, visitors can take a tour of the historical Ligatne Paper Factor, discover its history, the story of paper production and how the entire town of Ligatne was formed around the Ligatne Paper Factory. Excursions on Saturdays at 12.00 from June to October.



47 Ligatne Ferry

GPS 57.2549, 25.0442, +371 25737578

Guided by the power of the current, the ferry is a not only a monument to the history of Latvian machinery, but also the only current ferry to cross the Gauja. It was built in this location after the Second World War following the destruction of the bridge over the Gauja.



48 Ligatne's Birch Bark Weavers

Ikneši, Ligatne Parish, GPS 57.2150, 25.0911, +371 26310401

Among the rare birch bark weavers in Latvia are folk crafts masters Vizma and Pēteris Zvirbulis. These birch bark masters will explain and demonstrate how to make over 50 products from birch bark. Advance booking required.

49 Ligatne Vineyard

Springu Street 3, Ligatne, GPS 57.2329, 25.0420, +371 26521467, +371 28602642, www.ligatnesvinadaritava.lv

The Ligatne Vineyard is a family business that makes over 20 wines and other beverages from Latvian berries and fruit. Booking in advance, you can enjoy a wine tasting in Lustūža Cliff cave cellar.



50 Ozoliņi Farm

Annas Ozoliņi, Zaube Parish, GPS 57.0360, 25.4108, +371 29174664, www.ozolini.lv

Take a walk through the meadows and enjoy your hosts talk about the healing powers of medicinal herbs. Sample and buy teas. Mandala tea preparation.

51 Secret Soviet Bunker

Skaļupes, Ligatne Parish, GPS 57.2554, 25.0688, +371 64161915, +371 26467747, www.bunkurs.lv

This secret Soviet era bunker is located 9 m below ground in the grounds of the Ligatne Rehabilitation Centre. Visitors to the bunker can play the reality game Object X, have a party in the bunker and enjoy a meal in the underground café.

52 Paper Factory Workers' Apartment

Brīvības Street 5, Ligatne, GPS 57.2341, 25.0402, +371 29189707



The Ligatne Paper Factory's workers' apartment has been restored in the historical style characteristic of the early 20th century. Visitors can watch a video film about the domestic life of the families of the paper factory's workers, whose script was inspired by the story of a contemporary witness to the era.

53 Cultural Centre – Castle Cellar Tea House

GPS 57.2349, 25.0422, +371 27902954

The castle cellars are surrounded by the complex of caves. By making a reservation, you can enjoy an Asian tea ceremony and vegetarian dishes cooked over a live flame. Advance booking required.

54 Folk Fishery Crafts Museum

Gaujas Street 38, Ligatne, GPS 57.2546, 25.0446, +371 29232837

This museum is home to a diverse collection of fishing tackle, and is further enhanced by your guide's narrative about the Gauja, its fishermen and their tackle. Advance booking required.

55 Net Park

Gaujas Street 4, Ligatne, GPS 57.2359, 25.0380, +371 25779944, www.tikluparks.lv

The 4-7 m high net labyrinths are the perfect place to enjoy some proper fun, rest and relax. An indoor play room is also available, along with a café and hotel. Open every day, all year round.



56 Vienkoči Park and Woodcraft Museum

Vienkoči, Ligatne Parish, GPS 57.1915, 25.0547, +371 29329065, www.vienkoci.lv

A walking and leisure park on the banks of the River Ligatne. Its diverse zones are home to models of histori-

cal buildings in and around Ligatne, wooden sculptures, ethnographic buildings and historical exhibits linked to woodcraft. Indeed, the territory is graced by a Woodcraft Museum complete with ancient artisans' work tools and domestic items.



57 Zaube Lutheran Church, Manor Park

Zaube, Zaube Parish, GPS 56.9975, 25.2585, +371 29183163

A church unique for its tower and oak door which are over 350 years old. The façade is lined with high and narrow window frames reminiscent of arrow slits. Next to Lake Lejas ezers is the famous Zaube Oak.

58 ZEIT Creative Quarter

Gaujas Street 4, Ligatne, GPS 57.2361, 25.0376, +371 25779944, www.zeit.lv

Zeit is a place in a former helmet factory to enjoy festivities, attend concerts, organise seminars and stay overnight in a contemporary hotel. This is an ideal environment for families with kids complete with a large play space and a net park where both adults and kids can feel fully free among the 4-7m high net labyrinths.



Cafés and Restaurants

Annas Hotel Restaurant

KANNAS, Annas, Zaube Parish,
+371 67722288

Burgers 66, Rasiņas, Augšligatne

+371 20466600

Pie Jančuka Café, Sprīņu Street

4, Līgatne, +371 29149596

Pavāru māja in Līgatne, Pilsoņu

Street 2, Līgatne, +371 27331222

Rehabilitation Centre Līgatne

Café, Skaļupes, Līgatne Parish,

+371 64161915,

+371 26467747

Suses Burgers Mobile

Burger Van, next to the Līgatne

Nature Trails, +371 26676627 ☒

Vilhelmines dzirnavas, Sprīņu

Street 1, Līgatne, +371 27551311

Zeit Café, Gaujas Street 4,

Līgatne, +371 25779944

Restaurant 1815, Sprīņu Street 1,

Līgatne, +371 27222555

Accommodation

Annas Hotel, Annas, Zaube

Parish, GPS 57.0381, 25.3669,

+371 67722288,

www.annashotel.com

Resort Hotel Līgatne, Skaļupes,

Līgatne Parish,

GPS 57.2558, 25.0681,

+371 64161915, +371 26467747

Hotel Springšļu Dzirnavas,

Līgatne Parish,

GPS 57.1437, 25.1416,

+371 22009017,

www.ligatnesdzirnavas.lv

Hotel Zaļais Lācis, Gaujas Street

22, Līgatne, GPS 57.2454, 25.0459,

+371 20241431

Hotel Zeit, Gaujas Street 4,

Līgatne, GPS 57.2359, 25.0380,

+371 25779944

Holiday Home Avoti, Līgatne

Parish, GPS 57.2370, 25.0156,

+371 29468566

Briežu Stacija Off Grid Cabin,

Rītausmas Street, Līgatne,

GPS 57.2316, 25.0754,

+371 27743732

Holiday Home Green Hill House,

Ķempju Street 10-10a, Līgatne,

GPS 57.2330, 25.0532,

+371 26453064

Rural Leisure Accommodation

Pie Ezerrozēm, Nītaure Parish,

GPS 57.0457, 25.2864,

+371 29155111, www.pieezerrozem.lv

Country House Liepkalni,

Nītaure Parish, GPS 57.0643,

25.1878, +371 29156765

Holiday Home Mākoņi,

Līgatne Parish,

GPS 57.2231, 24.9381,

+371 29428404

Guest House Ezernieki,

Augšligatne, Līgatne Parish,

GPS 57.1988, 25.0089,

+371 27024303

Guest House La Rīfs, Stacijas

Street 6, Augšligatne, Līgatne

Parish, GPS 57.1854, 25.0271,

+371 26701050

Guest House Nītaures dzirnavas,

Nītaure Parish, GPS 57.0728,

25.1852, +371 29176967,

www.nitauresdzirnavas.lv

Guest House Upmaļi, Līgatne

Parish, GPS 57.1833, 25.0566,

+371 29409257

Guest House Vilhelmine,

Brīvības Street 5, Līgatne,

GPS 57.2341, 25.0401,

+371 26543251

Guest House 9 garšas, "Saukumi",

Saukumi, Ķopas, Līgatne

Parish, GPS 57.2112, 25.0100,

+371 28682006, +371 29121955,

www.9garsas.lv

Guest House Agave and

Summer House Stallis,

Veczīguri, Līgatne Parish,

GPS 57.1422, 25.1039,

+371 26407514, www.agavelv.lv

Canoe Campsite Makars,

Gaujas Street 36, Līgatne,

GPS 57.2542, 25.0453,

+371 29244948, www.makars.lv

Campsite-Guest House Aizvēji,

Lejas Āmuri, Zaube Parish,

GPS 57.3266, 24.4087,

+371 29212179

Leisure Base, Guest House and

Campsite Zemturi, Līgatne Parish,

GPS 57.1559, 25.1716,

+371 29482791,

www.ligatneszemturi.lv

Tūrisma mītne Zviedri,

Rīgas Street 1-11, Līgatne,

GPS 57.2313, 25.0398,

+371 28645080

University of Latvia Leisure

Complex Ratnieki,

Līgatne Parish, GPS 57.2232,

24.9627, +371 64155688,

+371 26445211, www.ratnieki.lv

AMATA

and vicinity

Garlanded with legends and rich in history, the Amata and its vicinity are captivating in their diversity. A walk around the loftily built Āraiši lake castle and a handful of grain ground by hand in a windmill are just a few of the sensations that the picturesque Amata and its vicinity offer visitors.

Photo: Amata River Valley



59 Amata Nature Trails

Drabeši Parish, GPS 57.2223, 25.2352

Melturi – Kārļi Fish Farm - Zvārte Rock - Veclauči Bridge (19 km). Ideal for hiking, Nordic walking and bird watchers. 43 geocaches are hidden along the trail. The trail is only along the right bank of the Amata and is not suitable for bike riding.

60 Āraiši Lake Castle Archaeological Park

Āraiši, Drabeši Parish, GPS 57.2517, 25.2824, +371 25669935, www.araisi.com

A visit to Āraiši Archaeological Park can become a real journey into the past as you visit exhibitions of stone and bronze era homes on Meitu Island. Āraiši Lake Castle is the only reconstruction of a 9th–10th century fortified inhabited place in Europe. The ruins on view on the lake shore retain the imprints of the Middle Ages. 🏰



61 Āraiši Mill

Āraiši, Drabeši Parish, GPS 57.2477, 25.2712, +371 29238208, www.araisuvejdzirnavas.lv

Visitors can inspect the restored mill's mechanism, which is installed on several floors of the mill. They can also take advantage of a special offer: every year, visitors can try out milling grain on Saint Jacob's Day, otherwise known as the festive day of new rye bread. Also open to the public nearby is Āraiši Lutheran Church. 🏰



62 Cecīli Nature Trail

Drabeši Parish, GPS 57.2183, 25.1657, +371 26457649, +371 29477700, www.cecilutaka.lv

A private landscaped nature trail with various natural sights worth seeing including the Cecīli Rock, the

Dančupīte Cave and the Cecīli Pine Tree, etc. The trail is not suitable for going for a walk with a baby stroller or for bike riding.

63 Give Me Your Paw – an Adventure with Huskies

Papardes 2, Drabeši Parish, GPS 57.2417, 25.2856, +371 25951531, www.dodkepu.lv

Visitors to the farm can not only cuddle the dogs, but also take an exciting ride on a huskie-drawn sleigh through snowy forests and fields, and during the summer enjoy treks in the company of these happy companions who love people a great deal.



64 Drabeši Manor Crafts House

Drabeši, Drabeši Parish, GPS 57.2437, 25.2793, +371 20199870

The Crafts House was built at Drabeši Manor as part of the manor complex constructed at the start of the 19th century. Visitors can learn ancient crafts and handicrafts, and discover traditions, songs, dances and games.

65 Ieriķi Nature Trail

Ieriķi, Drabeši Parish, GPS 57.2082, 25.1704, +371 28396804, www.ierikudzirnavas.com

The Meldrupite waterfall, floral arrangements, millwheel and walls. In the autumn and winter, when darkness sets in, the Light Park opens along the mill trail.

66 Melānija Vanaga Museum

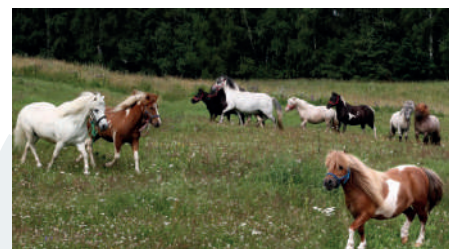
Amata Parish, GPS 57.1673, 25.2780, +371 29445480, www.melanijavanaga.lv

The message from commemorative items and the testimonies of Melānija Vanaga's 16 years in exile offer visitors an intimate insight into not only the writer's destiny, but that of all those deported to Siberia. Not far from the museum, one can view the only Siberian dugout in Latvia, which was conceived by the children of Siberia deported on 14 June 1941.

67 Sesīli Ponies

Sesīli, Drabeši Parish, GPS 57.2526, 25.2083, +371 26595545

Among the activities you can try out during a visit to this farm are pony rides, or a ride in a carriage, or a sleigh in winter. Moreover, children's birthday parties can also be organised here. Advance booking required.



68 Health Laboratory

Livi, Drabeši Parish, GPS 57.2836, 25.2517, +371 26567007, www.veselibaslaboratorija.lv

Visitors to the Health Laboratory can enjoy a demonstration of berry and fruit vodka production, as well as sample and buy products. Advance booking required.

Cafés and Restaurants

Restaurant Jonathan Spa Estate,
Amatciems, Drabeši Parish,
+371 25606066

Café Melturi, Melturi, Drabeši Parish, +371 68301272

Pie Dzirnakeņa Tavern,
Ieriķi Windmill, Drabeši Parish,
+371 64170089

Accommodation

Hotel Melturi, Sarkanāboli, Drabeši Parish, GPS 57.2176, 25.2315, +371 29267224

Country Hotel Kārļamuiža,
Kārļi, Drabeši Parish,
GPS 57.2405, 25.2120, +371 26165298

Holiday Home Dzērves,
Drabeši Parish, GPS 57.2562, 25.3083, +371 29256285, +371 29408606

Holiday Home Ezerklabi,
Amata Parish, GPS 57.1758, 25.24632, +371 29266445, www.ezerklabi.lv

Jonathan Spa Hotel, Ezerputni, Amatciems, Drabeši Parish, GPS 57.2253, 25.3035, +371 25606066, www.jonathanspahotel.com

Holiday Home Koka Māja,
Amatciems, Drabeši Parish,
GPS 57.2246, 25.3048, www.kokamaja.com

Holiday Home Meža rozes,
Mežrozes, Amata Parish,
GPS 57.1897, 25.2041, +371 29143244

Holiday Home Murmulmuiža,
Zāgeru dzirnavas, Amata Parish,
GPS 57.1898, 25.3514, +371 29407904

Sauna House, Āraiši, Drabeši Parish, GPS 57.2477, 25.2712, www.araisuvejdzirnavas.lv

Guest House Bille, Billite, Bille, Drabeši Parish, GPS 57.2185, 25.2399, +371 29221082

69 Zvārte Rock

Zvārte Rock, Drabeši Parish, GPS 57.2459, 25.1424, +371 29252126

One of the most picturesque Devonian sandstone rock outcrops in Latvia. Crossing the pedestrian bridge over the River Amata, one can climb to the summit of the rock and walk the Forest Mother's Trail. A tourism information centre is in operation and excursions are available.



Kārļamuiža Country Hotel Restaurant, Kārļi, Drabeši Parish (reservations only), +371 26165298

Guest House Eglaines, Drabeši Parish, GPS 57.2383, 25.1919, +371 29172332

Guest House Kalniņi,
Jaunkalniņi, Drabeši Parish,
GPS 57.2382, 25.2570, +371 26022248, +371 29653195

Guest House Laimis Iigzda,
Lejas Astītes, Drabeši Parish,
GPS 57.2564, 25.24598, +371 29158821

Guest House Pie tēva Tuka,
Akmeņkalni, Drabeši Parish,
GPS 57.2583, 25.2647, +371 29186772

Guest House Virgabali, Drabeši Parish, GPS 57.2585, 25.2666, +371 2782626, +371 26597100

LIEPA and vicinity

Studying the map, one sees that Liepa Parish is in the very heart of Vidzeme, between three industrious towns: Cēsis, Valmiera and Smiltene, while the entrance to it from Cēsis is guarded by the highest railway bridge in the Baltics. In the vicinity of Liepa, everyone has the chance to encounter Veidenbaums and bake some bread or pīrāgi (bacon buns) with the flavour of freedom.

Photo: Devil's Oven

LIEPA and vicinity

21

70 Veidenbaums Memorial Museum Kalāči

Liepa Parish, GPS 57.3955, 25.4780, +371 25601677

Kalāči is a farm built in the 19th century where Eduards Veidenbaums lived. The museum offers visitors the chance to walk to the places that inspired Veidenbaums and spend some time in the famous Veidenbaums barn, learning about the secrets of his short but colourful life, discovering his poetry anew, his active life position, and to identify his legacy in today's cultural landscape.

71 Devil's Oven

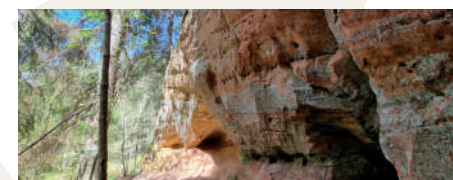
Rūpnīcas Street 18, Liepa, GPS 57.3844, 25.4275

One of the oldest tourism destinations in Latvia. Together with the spring, where underground waters freely flow around the sandstone, the Devil's Oven becomes a stopping point, whose special atmosphere stems from the sense that it was once an ancient cult site.

72 Liču-Laņķu Cliffs

Liepa Parish, GPS 57.3902, 25.4165

A rocky cliff, approximately 1 km long, which with its diverse range of outcrop forms and caves eroded by springs is concealed along the left bank of the Ancient Gauja River Valley. The walking route is approximately 6 km long. The trail is not suitable for going for a walk with a baby stroller or for bike riding.



73 Krūmiņi House of Bread

Liepa Parish, GPS 57.3631, 25.3987
+371 26887921, www.maizesmaja.lv

Cafés

Café Pieturi Liepā,
Rūpnīcas Street 1A, Liepa,
+371 28712422

Café Pie Rikardiona,
Rūpnīcas Street 19, Liepa,
+371 20028129

Accommodation

Country Hotel Liepa Manor,
Liepa Parish, GPS 57.3694,
25.4378, +371 28490600,
www.liepasmuiza.lv

Holiday Home Lejas Ozoli,
Liepa, Liepa Parish,
GPS 57.4431, 25.4279, +371 29432515

Holiday Home Sillakas, Liepa
Parish, GPS 57.3573, 25.4506,

Visitors can prepare dough and bake pīrāgi (bacon buns), study grains, cereal products, and Latvian power symbols and discover traditions connected to bread. Advance booking required. 📞



74 Sillakas Fish Farm

Liepa Parish, GPS 57.3573, 25.4506, +371 29188367,
www.sillakas.lv

Anglers will be definitely be delighted by the opportunity to catch trout, carp, catfish, sturgeon and chars in five of the eleven fish ponds at Sillakas. The hosts offer to cook your catch, smoking it or by cooking fish soup. If fishing does not appeal to you, you can take a tour of the trout rearing facility, as well as to buy and sample fish.

75 Skangāļi Manor

Skangāļi, Liepa Parish, GPS 57.3989, 25.4943,
+371 25300030, www.skangali.lv

Far removed from the urgency of daily life, this old country manor house is located between the towns of Cēsis and Valmiera. Currently, it is maintained and brought to life by the Latvian Children's Support Foundation, which organises various camps and events at the manor. Tours are available provided that you book in advance.



+371 22028132, +371 29453244,
www.sillakas.lv

Guest House Grīviņu Sauna,
Liepa Parish, GPS 57.4109, 25.4115,
+371 26751908

Leisure Complex Mežrozes,
Liepa Parish, GPS 57.3625, 25.3987,
+371 29426230, +371 25441377,
www.mezrozes.lv



PIEBALGA

and vicinity

A meeting place not just in a century's time, but every day. Immortalised in legends and song, Piebalga's power of attraction is not just down to its colourful water lilies. This is where Kārlis Skalbe, the Kaudzīte brothers, Emīls Dārziņš, Jānis Sudrabkalns and other Latvian luminaries drew their inspiration. Anyone who visits these parts can testify to the famed hospitality of Piebalga folk.

Photo: Lake Inesis

PIEBALGA and vicinity

23

76 Apimi

Ineši Parish, GPS 57.0191, 25.8305,
+371 28341529, www.apimi.lv

Apimi are natural cosmetics made in Latvia, with ingredients including bee products — mostly honey, wax and propolis. The Apimi brand was created by sisters Madara and Ieva, drawing inspiration from the bees on their dad's farm and the properties of bee products. Visitors have the chance to take a tour of the production premises.

77 Baltie Darbi Studio

Rūpniecības 1A, Jaunpiebalga Parish,
GPS 57.1822, 26.0324, +371 226114226,
www.baltiedarbi.com

Costume designer Ilze Prūse offers visitors the chance to view and discover the history of linen clothing from ancient times through to the present day. Ilze will also present her clothing collection, giving visitors the opportunity to buy linen dresses, nocturnal attire, dresses for christenings, clothing for children and linen textile products.

78 Museum of the First Latvian National Opera Baņuta

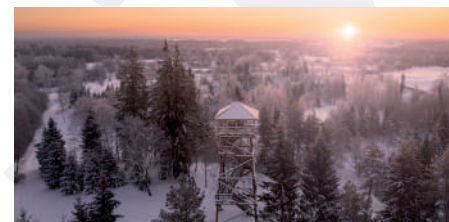
Piekalnes, Zosēni Parish, GPS 57.1492, 25.9297,
+371 29244251, +371 28736495

The park and museum dedicated to the first Latvian opera Baņuta is located in the native home of the librettist's author Artūrs Krūmiņš at Skrāģu Tavern, located at the side of the historic St.Petersburg-Vecpiebalga Road. Baņuta Park is not only a sightseeing destination of cultural and historical interest, but also a picturesque location, especially Tīrgskalns, which is one of the highest hills in the vicinity, as well as Kāpurkalns (Māras) Lake.

79 Brežģa Hill Viewing Tower

Brežģa Hill, Taurene Parish, GPS 57.1131, 25.6930

Height of the hill: 255 m above sea level, relative height: 40 m. The 11 m high Brežģa Hill viewing tower was opened in 2017. This is the place to catch sights of Lake Alauksis and Lake Zobols, and perhaps even Lake Inesis and to decipher which of the hillocks in the distance is Elkas Hill. A picnic and rest area is available to visitors.



80 Leisure Complex Chill up

Raskumi, Vecpiebalga Parish,
GPS 57.0847, 25.8096, +371 20377207, www.chillup.lv

Visitors have access to a campsite, sauna, wakeboard and SUP boards. Rowing boats and bikes are available for rental. Active recreation fans can enjoy the use of the water attraction park. Overnight accommodation is also available, along with a tent area for corporate events.



81 Dzērbene Castle and Local History Exhibition

Dzērbene Parish, GPS 57.1959, 25.6662,
+371 29408315

Dzērbene Castle is home to a local history exhibition including materials and exhibits about various stages of history. Glove Jettiņa's Memorial Room is also open to the public. Visitors can take guided tours of the castle area available, climb up the castle tower and try out their skills in the escape room.



82 Dzērbene Lutheran Church

Dzērbene Parish, GPS 57.1914, 25.6780,
+371 29408315

Built under the watchful eye of master builder Mārcis Sārums. Consecrated in 1842. The church is home to an organ made by the Martin firm, while the altar is adorned with a copy of Rubens' painting Christ on the Cross.



83 Artist Inese Īris Liepiņa's Knitting Studio Dzirkstīņi

Jaunpiebalga Parish, GPS 57.10903, 25.95978, +371 29257989, Shop.wrapaturebyinese.com

Visitors have the chance to learn to paint with yarn during a masterclass, replicating the multitude of colours they see in nature with yarn in knitting or crocheting. In her studio, they try on and buy Inese's knitwear, as well as ordering something original. Advance booking required.

84 Elkas Hill

Skujene Parish, GPS 57.0838, 25.5916, +371 25669935

The place where the Gauja begins. The highest of the large hillocks at 260.7 m above sea level, with a broad viewing panorama. Elkas Hill is one of the points on the Strive geodesic arc. A walking route has been created, and the services of a guide are available.

85 Candle House (GardeniaEco)

Ineši Parish, GPS 57.0202, 25.8303, +371 22080211, www.gardeniaeco.com

Visitors to the candle workshop installed in the servants' house at Vecpiebalga Manor can pour a wax candle, which is enhanced with plants and ethereal oils. If they like what they see, they can also buy the finished product. 🕯️

86 Brand Gusts Apinis's Farm

Cimbuļi, Skujene Parish, GPS 57.0199, 25.4287, +371 29208644

Signe and Elmārs Šlosbergs grow buckwheat and quinoa and make various products from them. Visitors to the farm can part in quinoa cooking masterclasses and samplings.

87 Indrāni Farm

Indrāni, Skujene Parish, GPS 57.0908, 25.4955, +371 29455715, www.zsindrani.lv

A confectionery factory, jewellery workshop, summer café, shopping, samplings, picnic baskets, pop-up events and hospitality for tourists are just some of the joys on offer at this farm.

88 Jaunpiebalga Saint Thomas's Evangelical Lutheran Church

Gaujas Street 23, Jaunpiebalga, GPS 57.1766, 26.0362, +371 28381573

Visitors to the church can admire the starry ceiling, gaze at the gothic interior and sit in any one of 800 seats. The ancient organ can be heard during both

church services and concerts. Over 100 years ago, this is where a notable resident of Piebalga, composer Emils Dārziņš learned to play the organ.

89 Jaunpiebalga Local History Museum

Gaujas Street 41, Jaunpiebalga, GPS 57.1663, 26.0177, +371 26615072

Opened in 1977, the museum offers visitors exhibitions about Piebalga, the folks who live here and the history of its schools, as well as ethnographic exhibits. Visitors can try their hand at writing with a quill pen and ink.

90 Emils Dārziņš and Jānis Sudrabkalns Memorial Museum Jānaskola

Jānaskola, Jaunpiebalga Parish, GPS 57.1112, 25.9315, +371 26563815, www.piebalgasmuzeji.lv

Walking through the rooms of the school building built in 1871, listening to the memorial tales and Dārziņš music, visitors can try to solve three riddles – those of the artist's life, death and the secret of his art. Meanwhile, the Oliveretto Trail, which winds and winds its way alongside the museum will introduce you to the world of poet Jānis Sudrabkalns. 🚫

91 The Kaudzīte Brothers' Memorial Museum Kalna Kaibēni

Kalna Kaibēni, Vecpiebalga Parish, GPS 57.0280, 25.7224, +371 26185382, www.piebalgasmuzeji.lv

The museum is located in the first Piebalga rural school, where the Kaudzīte brothers wrote their influential novel The Times of the Land Surveyors. Visitors have the chance to take a walk in the garden designed by Matiss Kaudzīte. A viewing platform is available offering a wonderful view of Piebalga's hillocks. 🚫



92 Kaive Manor Park

Kaive Parish, GPS 57.0507, 25.6311

Visitors to the park can admire the oak sculptures that

were made during the "Tree and Axe" symposium by the skilled hands of sculptors and other countries. The park offers a picturesque view of the open air stage and Lake Kaive.

93 Cinema Farm

Dadži, Vecpiebalga Parish, GPS 57.0630, 25.8276, +371 29119419

The curators of a private collection of old cinema paraphernalia invite you to join them for an exciting 90 minute excursion during which they will introduce you to the history of the moving image, and offer you the chance to view and touch moviemaking equipment.

94 Jumble and Antique Museum

Dzirnaiņi Skujene Parish, GPS 57.0973, 25.4744, +371 26262495

On view are various items useful for work on the farm, which were used until 1992. Visitors have the chance to try out these old work tools. Individual programmes are available for groups, along with a guided excursion.

95 Lielkrūzes Farm

Lielkrūzes, Jaunpiebalga Parish, GPS 57.1785, 25.9636, +371 29146397

Preservation of natural, cultural and historical heritage on a farm. Thematic excursions and events, an open air stage for outdoor events, as well as an exhibition hall.

96 Lode (Apšu) Lutheran Church

Taurene Parish, GPS 57.1393, 25.6081, +371 29352904

The church was built in 1780 in the horizontal log style and right up to the start of the 20th century, the building had a thatched roof, which was later replaced with wooden shingles. The tower was built in 1911. The church's windows are unique and have survived from the 18th century. The altar, pulpit and organ prospect were made in 1893. Scenes from the film Aija were filmed near the church. The inside of the church is open to the public.



97 Mazvieķi Farm

Mazvieķi, Zosēni Parish, GPS 57.1538, 25.8780, +371 26454701

Mazvieķi is in the extremely picturesque and peaceful location of Zosēni on the Vieķi Castle Mound. The farms specialises in sheep farming. During a tour of the farm, visitors are offered the chance to take a walk around the sheep pastures, listen to a comprehensive introduction to sheep farming, as well as enjoy some hot lamb soup.

98 Pigoru Workshop

Mazkrūzes, Jaunpiebalga Parish, GPS 57.1855, 25.9649, +371 28626469

Booking in advance, visitors can enjoy a guided excursion, accompanied by a talk by a tank drum maker about how these instruments are made. They can also enjoy a demonstration of the instruments, play instruments erected outdoors, as well as coming together to create a joint melody on the tank drums, creating a magical experience of sounds. Visitors can also stay overnight in a wigwam surrounded by the forest and musical instruments.



99 Piebalga Artwork Collection

Skolas Street 2, Zosēni Parish, GPS 57.1650, 25.8463, +371 26538154

On view in the collection are works of art that, at the instigation of Jēkabs Straziņš, were donated and collected at Pēterskola during the Second World War to form a golden collection of works of art by folk artists and professional artists from the Piebalga District. Visitors to the collection can view works by Jānis Valters, Jānis Jaunsudrabiņš, Jānis Cielavs, Hermanis Apločiņš, Jānis Titāns and other authors.

100 Piebalga Honey

Upmaļi, Vecpiebalga Parish, GPS 57.0556, 25.8255, +371 29493629, www.piebalgasmедus.lv

Beekeeping, apitherapy and a story about and revolving around bees. Visitors can sample and buy beekeeping products.



101 Piebalga Porcelain Factory

Piensaimnieki, Ineši Parish, GPS 57.0210, 25.8310, +371 28451800, www.porcelanadarbnica.lv

Piebalga's white gold is made at the Piebalga Porcelain Factory. Visitors can take a tour of the factory, discover the secrets of making fragile porcelain, and try out painting porcelain. 🏠



102 Pūces Dome House and Pūces Ceramic Studio

Pūces, Jaunpiebalga Parish, GPS 57.1583, 26.0137, +371 29439058

Take a tour of the dome house and enjoy stories about friendship with clay. Visitors can buy decorative tableware and interior items. Pottery masterclasses are available for small groups.

103 Vintage Car Show and Fairy-tale Forest

Spulgas, Zosēni Parish, GPS 57.1611, 25.7936, +371 29334191

Visitors can admire the vintage cars, book a moto ride or take a walk through the fairy-tale forest whose path leads to the river, when they can view a holy rock and cavities providing accommodation for ants.

104 Rikas Alpaca School

Lejas Ģibuļi, Vecpiebalga Parish, GPS 57.0667, 25.6971, +371 22011307, +371 26623637

Rikas Alpaca School offers visitors the opportunity to not only savour the Piebalga landscape, but also to admire alpacas, with whom they can go for a walk among these picturesque hillocks. 🏠

105 Kārlis Skalbe's Memorial Museum Saulrieti

Saulrieti, Vecpiebalga Parish, GPS 57.0780, 25.8418, +371 26494406, www.piebalgasmuzeji.lv

Kārlis Skalbe's summer house offers visitors unusual architecture, a romantic atmosphere, and the opportunity to spend some time visiting the Skalbe family's graves

at Vaktskalns Hills, which offers a view of Lake Alauksts. Museum tours are available along with thematic events, and a formal wedding ritual. 🏠

106 Skujene Lutheran Church

Baznīckalns, Skujene, GPS 57.0930, 25.4753, +371 26471215

The dissatisfaction of the congregation with the church tower built in 1780 led to the construction in 1901 of a new tower and a large extension to the church by the building contractor Mengelis. In 1903, the church acquired an organ, which at the time was considered to be the best among all rural congregations. In the location of the altar is a crucifix made by an unknown artist in 1772.

107 Vanagkalns Ski Trail and Boat Rental and Expeditions

Ziedoņi, Jaunpiebalga Parish, GPS 57.1150, 25.9491, +371 26567616, +371 27084919, www.skiriver.lv

Vanagkalns offers active recreation fans the opportunity to use the ski trail day and night, along a ski rental service. In summer, visitors can enjoy the use of Nordic walking trails. In addition to offering visitors the services of a guide, the venue also organises treks and boat rides. 🏠

108 Vecpiebalga Lutheran Church

Vecpiebalga, GPS 57.0579, 25.8218, +371 29163217

Open in 1845, this church was bombed in 1944. In 1997, the ancient walls were rebuilt, but minus the bell tower. Hanging above the altar is Jūlijs Jēgers' painting My peace I give to you.

109 Vecpiebalga Manor

Ineši Parish, GPS 57.0191, 25.8305

Vecpiebalga Manor is a grand building in the classical styles, which is surrounded by a landscaped park with a regular plan and many exotic species of trees and shrubs. Its prototype featured in the famous Latvian novel Mērnieku laiki (The Times of the Land Surveyors). The house can be viewed from the outside only.

110 Vecpiebalga's Water Lilies

Vecpiebalga, GPS 57.0616, 25.8147, +371 26109774, +371 26253468

Water lilies in a multitude of colours bloom in the centre of Vecpiebalga, at the side of the Cēsis-Madona carriageway from May to September. Kids will really enjoy feeding the fish by hand. Visitors can also buy water lily plants. 🏠

111 Vidzeme Lilac Shrub Nursery

Gaujas Murdēni, Zosēni Parish, GPS 57.1557, 25.8521, +371 29229933

Visitors to this garden will discover about 200 varieties of lilacs, along with hydrangeas and about 20 varieties of mock oranges. Although the garden is still quite new, visitors can observe the process of its creations and the planting of shrubs. Shrubs are available for sale.

112 Viņķi Hill and Viewing Tower

Viņķi, Jaunpiebalga Parish, GPS 57.1474, 26.0762, +371 26615072

Climb this sightseeing object to enjoy the glorious view from above of the hills and dales in Jaunpiebalga Parish. Jaunpiebalga's viewing tower has been built to a height of 17.8 m, and its structure is enhanced by artist Sandra Strēle's paintings of Latvian symbols and patterns on plaques.

113 Latvian Ethnographic Open-Air Museum Rural Exhibition Vēveri

Vecpiebalga Parish, GPS 57.1133, 25.8458, +371 29181219, www.piebalgasmuzeji.lv

The history of Piebalga's Vēveri dates back at least 400

years. On view in the exhibition are weaver's work tools ranging from a spool rack to looms, various fabrics, turner's and farmer's work tools, and household items and objects unfamiliar to people today. 🏠



114 3x9 zālītes

Pūcetes, Kaive Parish, GPS 57.0544, 25.6236, +371 26188218, www.zalutejas.lv

Booking in advance, a guided tour is available of the 3x9 zālītes nature trail, where walkers can encounter a multitude of wild flowers, enjoy nature in all its glory, sample some specials and buy some of the products made by 3x9 zālītes.

Cafés

Café Laura,
Vecpiebalga, +371 29358896

Café Ūdensroze,
Vecpiebalga, +371 27787588

Café Virpiķis,
Jaunpiebalga, +371 26404241

Accommodation

Holiday Home Avotnieki,
Dzērbene Parish, GPS 57.1694, 25.7340, +371 29284972

Holiday Home Dzintari Inn,
Dzintari, Kaive Parish, GPS 57.0583, 25.6254, +371 22011566

Elkas Hill House, Skujene Parish, GPS 57.0825, 25.5895, +371 29475811

Holiday Home Ezerkrasti,
Vecpiebalga Parish, GPS 57.1033, 25.7795, +371 29366057

Holiday Home Mazie Oši,
Ineši Parish, GPS 57.0194, 25.7885, +371 22013371, www.pupoli.lv

Holiday Home Vectūļi,
Ineši Parish, GPS 57.0417, 25.8587, +371 26445826

Jaunķūģi Biological Farm,
Jaunpiebalga Parish,

GPS 57.1583, 25.9581, +371 29461226

Guest House Dzirnava, Kaive Parish, GPS 57.0120, 25.6520, +371 29213828, www.dzirnavas.lv

Guest House Jaunogrīpi, Ineši Parish, GPS 56.9668, 25.8657, +371 29426585, www.jaunogrini.lv

Guest House Kalna Raskumi,
Vecpiebalga Parish, GPS 57.0876, 25.8094, +371 20422080

Guest House Lielkaibēni,
Vecpiebalga Parish, GPS 57.0907, 25.8440, +371 26211054

Guest House Saknītes,
Dzērbene Parish, GPS 57.2122, 25.7038, +371 26516512, +371 29176265

Guest House Urbiņi, Taurene Parish, GPS 57.1460, 25.6966, +371 26518999 🏠

Campsite Akmens Isle,
Ineši Parish, GPS 57.0329, 25.8147, +371 26529051

Campsite Chill Up,
Raskumi, Vecpiebalga Parish, GPS 57.0847, 25.8096, +371 20377207, www.chillup.lv

Campsite Niedrītes,
Vecpiebalga Parish, GPS 57.0832, 25.7675, +371 29101130

Campsite Vanagkalns,
Ziedoņi, Jaunpiebalga Parish, GPS 57.1150, 25.9491, +371 26567616, www.skiriver.lv

Leisure Base Ezerrozes,
Skujene Parish, GPS 57.0878, 25.3790, +371 29411704, www.andrenkalni.lv



STRAUPE

and vicinity

Bisected by the River Brasla, Straupe reveals its charm through unique underground caves, the mysteries of Lielstraupe Castle and the vibrant atmosphere of Straupe Market, attracting visitors from near and enchanted by the magic of Straupe and vicinity.

Photo: Lielstraupe Castle Church complex

STRAUPE and vicinity

29

115 Ancient Brasla River Valley around the Brasla Fish Farm

Straupe Parish, GPS 57.2869, 24.9332, +371 29424021

Not far from the A3 carriageway, one can get a stunning view of the sandstone outcrops in the Ancient Brasla River Valley, and arrange an excursion to the Brasla Fish Farm.

116 Dainis Mežāncis's Smithy and Guest House

Bērzū Street 2, Straupe, GPS 57.3572, 24.9531, +371 26520523

Visitors to this creative blacksmith's workshop can observe a master blacksmith at work in the person of Dainis Mežāncis. He will enlighten visitors about the skills of a blacksmith and give them the chance to try their hand working at the forge. Alongside the smithy is a garden with rest areas for a small picnic, as well as a guest house with a sauna from groups of friends and relatives. Advance booking required.

117 Eicēni Farm

Dārziņi, Straupe, GPS 57.3477, 24.9513, +371 29108512

At Eicēni Farm, the hosts serve natural and health products, and delight in presenting them for the enjoyment of their guests. For the leisurely traveller, the hosts will offer a tour of the farm and a talk about how to work in the garden calmly and happily.

118 Hunting Education and Leisure Centre Mārkuliči

Āvaidi, Straupe Parish, GPS 57.3005, 24.9087 +371 29363936, www.markulici.lv

Breathtaking recreation for large and small adventure seekers. Visitors can try out various weapons on the firing ranges or explore the centre's impressive new swing park Brasla Adventure. Further opportunities for relaxation for available on sports fields, in a guest house and sauna, and in tent and campfire areas.



119 Lielstraupe Castle Church Complex

Lielstraupe Castle, Straupe, GPS 57.3473, 24.9473, +371 29464946 (castle), +371 26411827 (church)

One of the region's most impressive ensembles of historical medieval building, Lielstraupe Castle, invites visitors to take a journey through the centuries and find their way through the castle's mazes. As you climb the building's 26 staircases with almost 300 steps, you cannot fail to notice the finery of the old oak interior and tile stoves glazed at the start of the last century. However, the discernible presence of the former hospital gives rise to the overlapping of unexpected moods, centuries and events.



120 Slow Food Straupe Market

Straupe Stagecoach Station, Straupe Parish, GPS 57.3249, 24.9189, +371 29464946, www.straupestirdzins.lv

The only market for farmers and small producers in the Baltic States that is included in the international Earth Markets alliance. Visitors to the market can buy products corresponding to the slow food philosophy – seasonal, healthy, and grown in our district with environmental sustainability in mind. The market takes place on the first and third Sunday of every month.



121 Straupe Stagecoach Station

Straupe Parish, GPS 57.3249, 24.9189,
+371 29170247, www.zirgupasts.lv

The Straupe Stagecoach Station experienced its zenith during the 19th century, when it was visited by every traveller making the journey from Europe to St Petersburg. In 2016, the ancient complex of buildings was once again inscribed on Latvia's cultural history map when its renovation was begun with passion and great responsibility by its new landlords. Currently, it hosts the Slow Food Straupe Market twice a month.

Cafés

Café Bērzi, Bērzi, Plācis,
Straupe Parish, +371 25575426

Rožkalni Bread Café,
Šķesteri, Straupe, Straupe Parish,
+371 29641454

Accommodation

Holiday Home Upeslejas,
Straupe, GPS 57.3635, 24.9589,
+371 29441970

Holiday Home Vējiņi, Straupe
Parish, GPS 57.3401, 24.9057,
+371 29354189

Guest House Bērzi,
Plācis, Straupe Parish,
GPS 57.3628, 24.9772,
+371 29738677

Guest House Burtakas, Straupe
Parish, GPS 57.3443, 24.9393,
+371 29451234

Campsite Mārkuliči, Āvaidi,
Straupe Parish,
GPS 57.3007, 24.9091,
+371 29363936, www.markulici.lv

Campsite Lake Rucka,
Vecstārsti, Stalbe Parish,
GPS 57.4181, 24.9173,
+371 29421836

122 Vējiņi Underground Lakes

Vējiņi, Straupe Parish, GPS 57.3398, 24.9056,
+371 29354189, www.pazemesezeri.lv

A mysterious location on the banks of the River Brasla, where erosion caused by underground springs has created large caves. A unique system of caves with an underground stream and two beautiful underground lakes filled with clear and ice cold underground water is open to the public, but only in the company of a guide. After the walk, you can enjoy a picnic or relax at the Vējiņi Holiday Home.

TOURISM INFORMATION CENTRES:**Cēsis Tourism Information Centre**

Baznīcas Square 1, Cēsis, LV-4101
+371 28318318
info@cesis.lv
GPS 57.3127, 25.2717

Līgatnes Tourism Information Centre

Spriņģu Street 2, Līgatne, LV-4110
+371 29189707
visitligatne@cesunovads.lv
GPS 57.2333, 25.0362

visit.cesis.lv

Publisher: Municipal Agency Cēsis Tourism Development Agency, 2023

This booklet has been published including the photographs of Indars Krieviņš, Lauris Mihailovs, Rihards Serģis, Jānis Zilvers, in addition to photographs sourced from Amata, Pārgauja, Priekulji, Līgatne, Vecpiebalga and Jaunpiebalga Association Authorities, Cēsis and Līgatne tourism information centres, and businesses in the region.

Maps: SIA Karšu izdevniecība Jāņa sēta



Over **60**
LANDMARKS


You'll get
BETTER VALUE
travelling with
a Friend's Card!

Up to
-50%



Buy your Friend's Card here:

- Cēsis Tourism Information Centre;
- Līgatne Tourism Information Centre;
- Āraiši Lake Castle Archaeological Park;
- Lielstraupe Castle.

 DraugaKarte

 TurismsCesis

 VisitCesis

 visit_cesis

visit.cesis.lv